

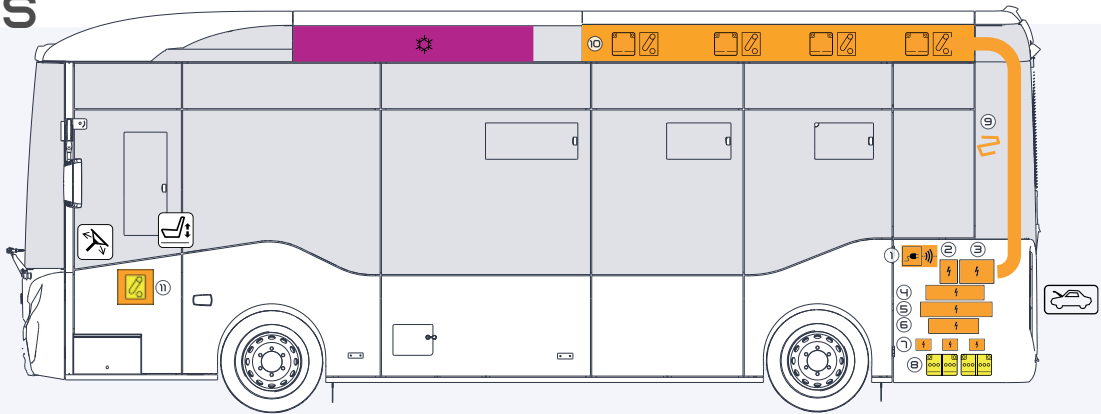


From 2021,

NOVOCITI VOLT

TECHNICAL DETAILS

A



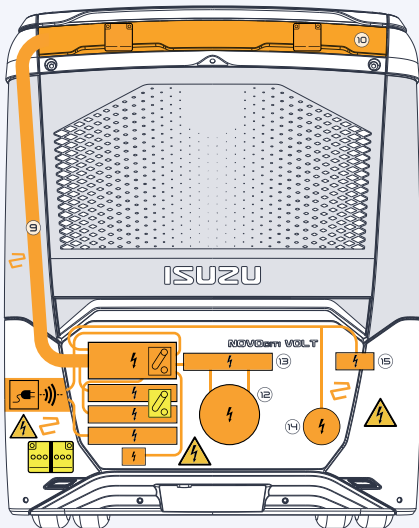
- 1 Charge Plug
- 2 PDU Aux
- 3 PDU Master
- 4 Battery Management Unit

- 5 On-Board Charger
- 6 DC-DC Converter
- 7 HV Heater
- 8 24V Batteries

- 9 HV Cable
- 10 HV Batteries
- 11 HV Disconnect Switch
- 12 E-Motor

- 13 Motor Inverter
- 14 E-Compressor
- 15 Heater Inverter

B



- Battery High Voltage
- Shutdown Power
- Disconnect High
- Battery Low Voltage

- Vehicle Induction Charging
- High Voltage Component
- Bonnet; Hood

- Warning, Electricity
- Steering Wheel Adjustment
- Seat Adjustment

- High Voltage Power Cable
- Air-Conditioner
- Left Hand Drive

01 IDENTIFICATION / RECOGNITION



Electric Bus With Inductive Charging



Lithium-Ion Battery



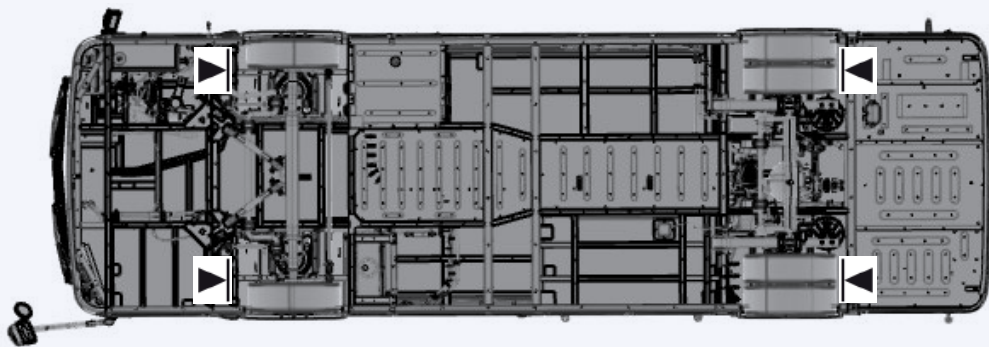
LACK OF ENGINE DOES NOT MEAN VEHICLE IS OFF. SILENT MOVEMENT OR INSTANT RESTART CAPABILITY EXISTS UNTIL VEHICLE IS FULLY SHUT DOWN. WEAR APPROPRIATE PPE.

02 IMMOBILIZATION / STABILIZATION / LIFTING

- 1 Choke wheels,
- 2 Put the vehicle in neutral (N) and engage the handbrake.



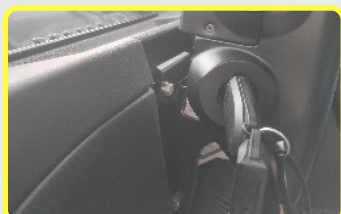
Lifting points,
Use these lifting points if it's needed.



03 DISABLE DIRECT HAZARDS / SAFETY REGULATIONS

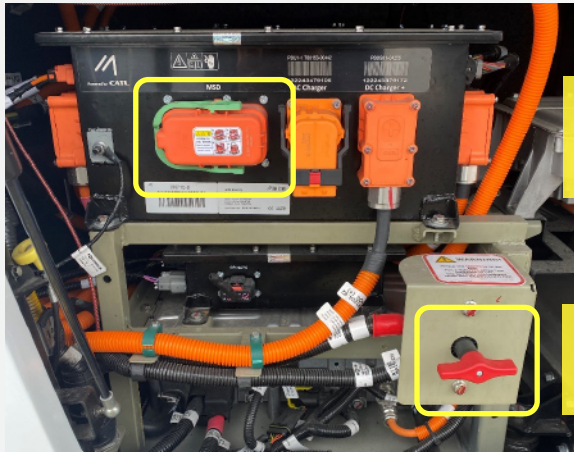


DO NOT ATTEMPT TO OPEN HIGH VOLTAGE BATTERY.



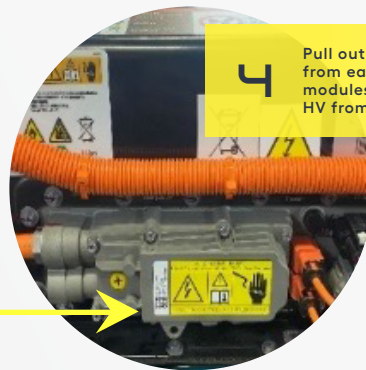
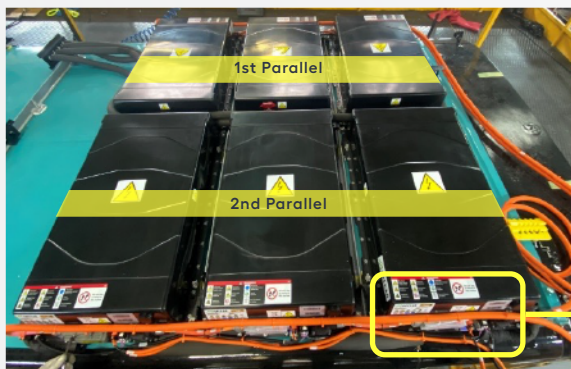
Main Method:

- 1 Stop engine via switching off the ignition key then go to back of the vehicle.



3 Stop engine via switching off the ignition key then go to back of the vehicle.

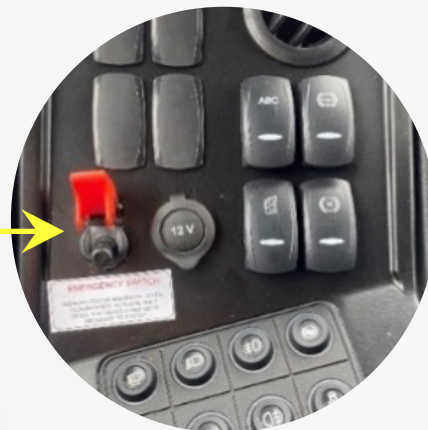
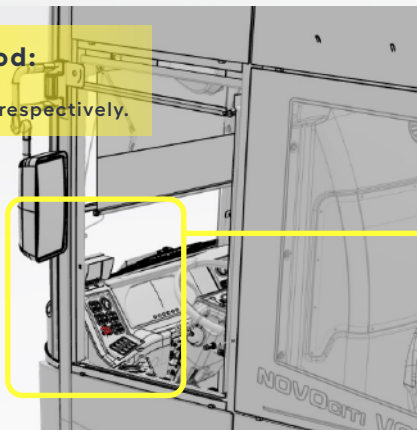
2 Switch off the LV main switch.



4 Pull out at least one MSD from each parallel battery modules that disconnects HV from batteries to PDU.

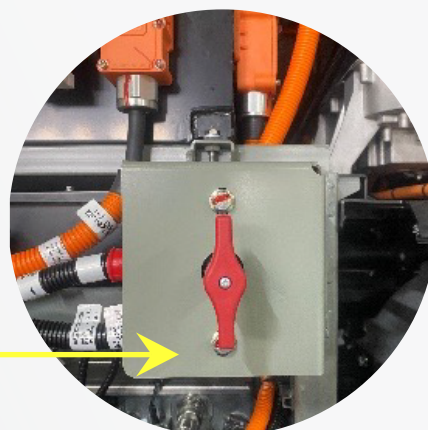
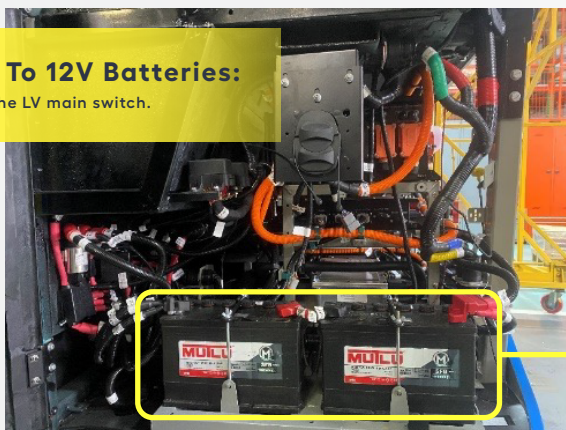
Alternative Method:

Pull emergency switch then repeat 2, 3 and 4. respectively.

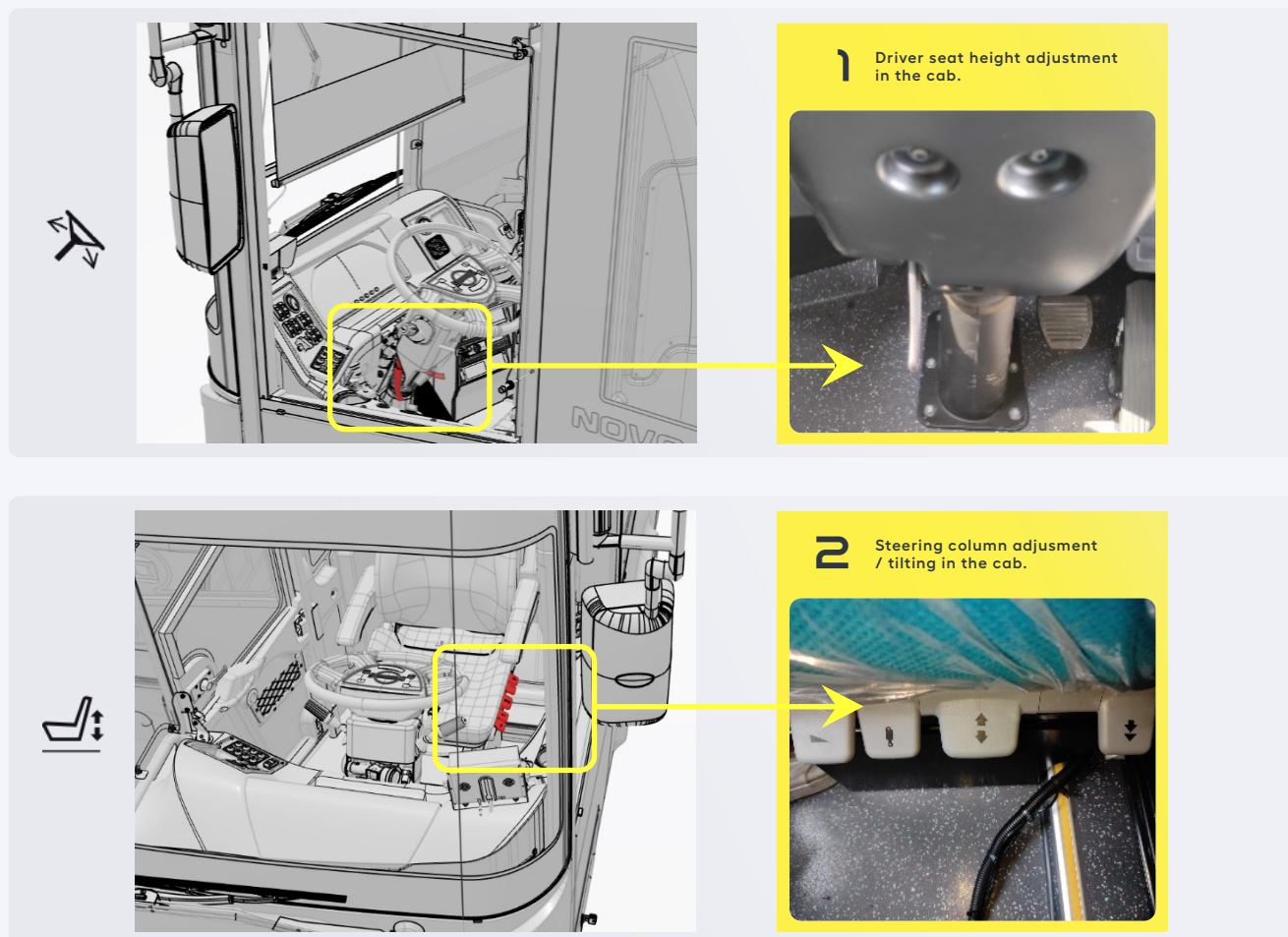


Access To 12V Batteries:

Switch off the LV main switch.



04 ACCESS TO THE OCCUPANTS



05 STORED ENERGY / LIQUIDS / GASES / SOLIDS

		600 V
		24 V (12 V x 2)
		4,4 Kg

06 IN CASE OF FIRE



Use Large Amount Of Water



After Risk Assessment,
If Necessary Use Foam

 **BATTERY REIGNITION!**

07 IN CASE OF SUBMERSION

Wear appropriate PPE. Remove the vehicle from the water and continue with normal high voltage (see chapter 3). Vehicles submerged in salt water should be handled with a greater potential risk of a HV battery fire.

Tilt the vehicle to one side to allow water to drain out of the vehicle and the high voltage battery.

05 STORED ENERGY / LIQUIDS / GASES / SOLIDS

Max Towing Speed: 30Km/h and Max Permitted Towing Distance: 100Km

