

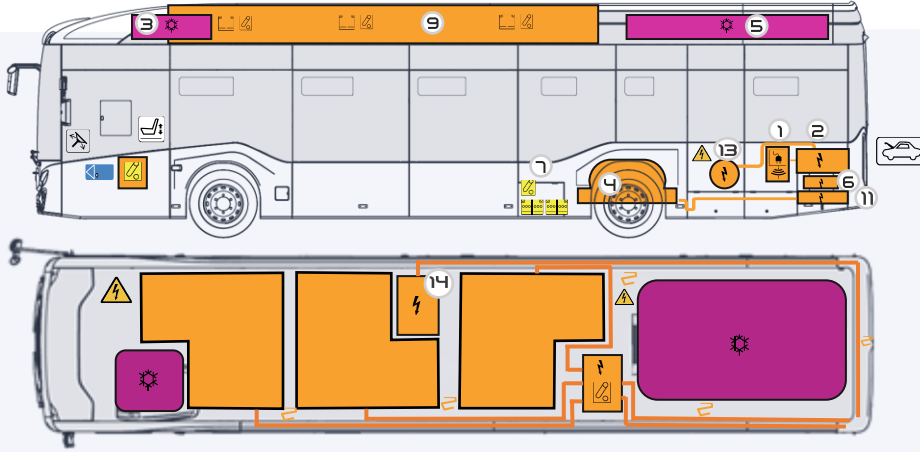


From 2023,

CITIVOLT12

TECHNICAL DETAILS

A



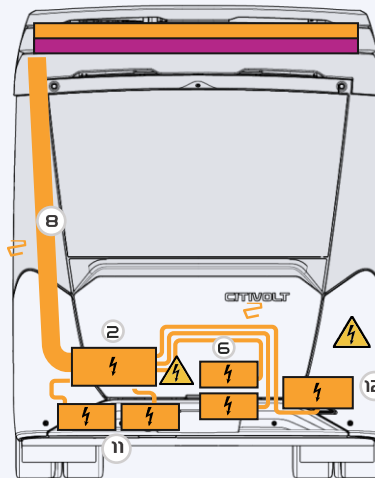
- 1** Charge Plug
- 2** Power Distribution Unit
- 3** Driver Air Conditioner
- 4** E-axle Motor

- 5** Passenger Air Conditioner
- 6** DC-DC Converter
- 7** 2x12V Batteries
- 8** HV Cable

- 9** HV Batteries
- 10** HV Disconnect Switch
- 11** E-axle Motor Inverter
- 12** E-Compressor

- 13** Heater
- 14** BTMS

B



- Battery High Voltage
- Shutdown Power
- Disconnect High
- Battery Low Voltage

- Vehicle Induction Charging
- High Voltage Component
- Bonnet; Hood

- Warning, Electricity
- Steering Wheel Adjustment
- Seat Adjustment

- High Voltage Power Cable
- Air-Conditioner
- Left Hand Drive

01 IDENTIFICATION / RECOGNITION



Electric Bus With Inductive
Charging



Lithium – Ion Battery



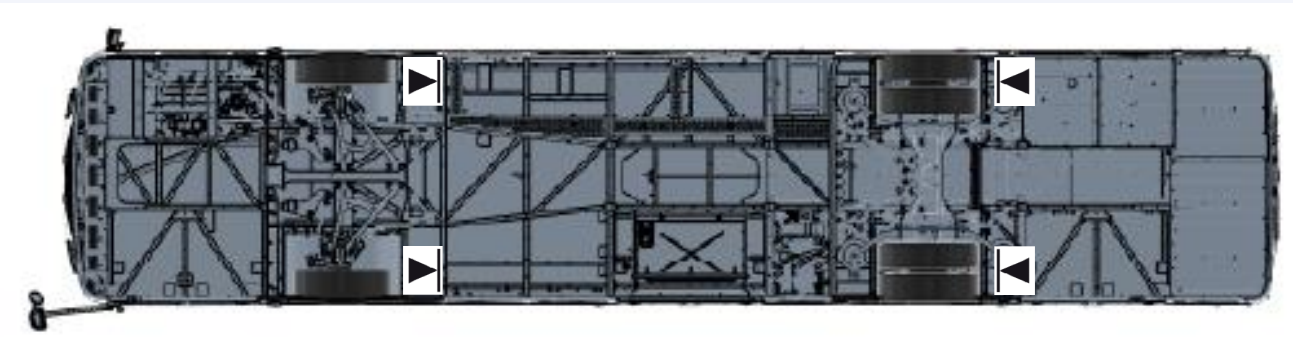
LACK OF ENGINE NOISE DOES NOT MEAN VEHICLE IS OFF. SILENT MOVEMENT OR INSTANT RESTART CAPABILITY EXISTS UNTIL VEHICLE IS FULLY SHUT DOWN. WEAR APPROPRIATE PPE.

02 IMMOBILIZATION / STABILIZATION / LIFTING

- 1 Choke wheels,
- 2 Put the vehicle in neutral (N) and engage the handbrake.



Lifting points,
Use these lifting points if it's needed.



03 DISABLE DIRECT HAZARDS / SAFETY REGULATIONS

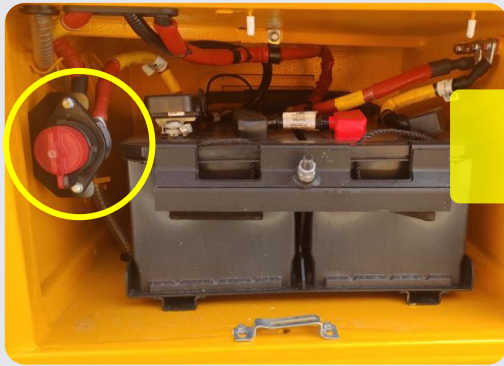


DO NOT ATTEMPT TO OPEN HIGH VOLTAGE BATTERY.



Main Method:

- 1 Stop engine via switching off the ignition key then go to the back of the vehicle.



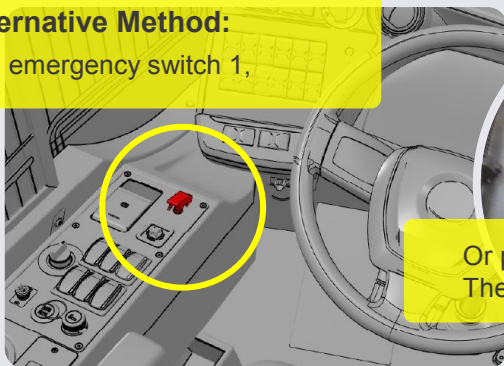
2 Switch off the LV main switch.



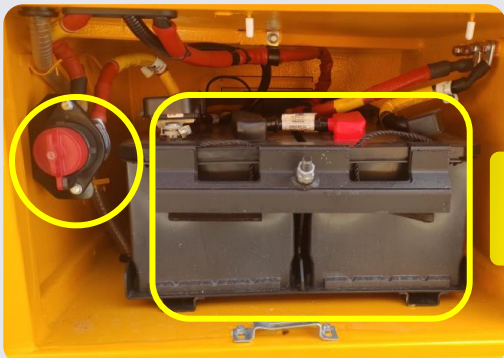
3 Pull out the MSD on PDU that disconnects HV from PDU to vehicle.

Alternative Method:

Pull emergency switch 1,



Or pull emergency switch 2,
Then repeat 2 and 3 respectively.

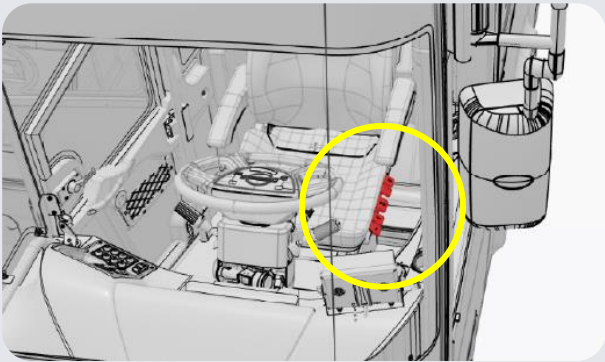


Access To 12V Batteries:
Switch off the LV main switch.

04 ACCESS TO THE
OCCUPANTS



1 Steering column adjustment
/ tilting in the cab.



2 Driver seat height
adjustment in the cab.



05 STORED ENERGY
/ LIQUIDS / GASES / SOLIDS



660 V



12 V X 12 V



4,8 kg + 1,1 kg

06 IN CASE OF FIRE



Use Large Amount Of Water



After Risk Assessment,
If Necessary Use Foam



BATTERY RE-IGNITION!

07 IN CASE OF SUBMERSION

Wear appropriate PPE. Remove the vehicle from the water and continue with normal high voltage (see chapter 3). Vehicles submerged in salt water should be handled with a greater potential risk of a HV battery fire.

Tilt the vehicle to one side to allow water to drain out of the vehicle and the high voltage battery.

08 TOWING / TRANSPORTATION / STORAGE

Max Towing Speed: 60km/h

