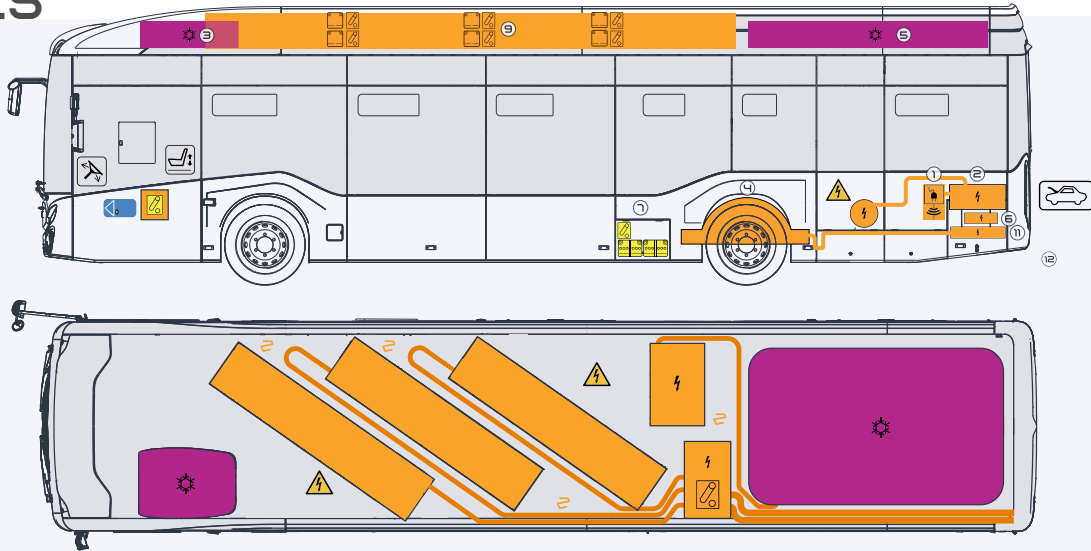




From 2023,

CITIVOLT 12

TECHNICAL DETAILS



1 Charge Plug

2 Power Distribution Unit

3 Driver Air Conditioner

4 E-axle Motor

5 Passenger Air Conditioner

6 DC-DC Converter

7 2x12V Batteries

8 HV Cable

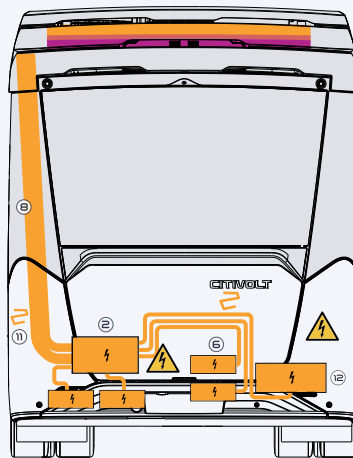
9 HV Batteries

10 HV Disconnect Switch

11 E-axle Motor Inverter

12 E-Compressor

13 Air Conditioner Inverter



Battery High Voltage

Shutdown Power

Disconnect High

Battery Low Voltage

Vehicle Induction Charging

High Voltage Component

Bonnet; Hood

Warning, Electricity

Steering Wheel Adjustment

Seat Adjustment

High Voltage Power Cable

Air-Conditioner

Left Hand Drive

01 IDENTIFICATION / RECOGNITION



Electric Bus With Inductive Charging



Lithium-Ion Battery



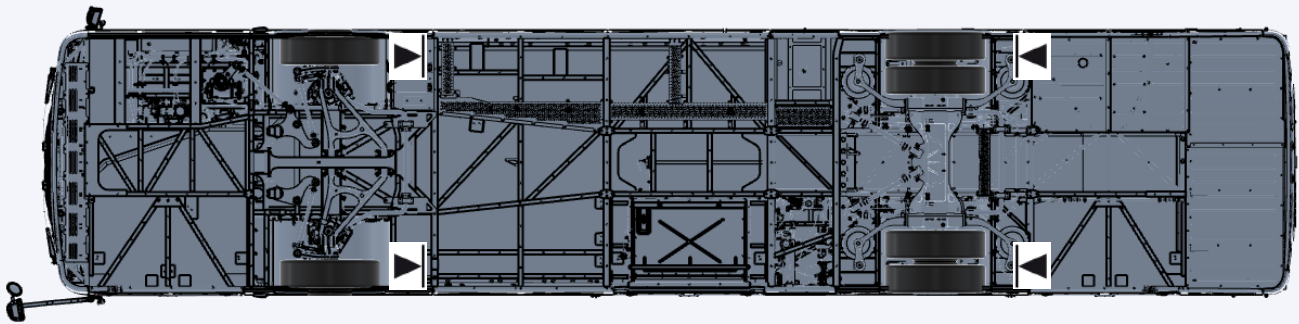
LACK OF ENGINE NOISE DOES NOT MEAN VEHICLE IS OFF. SILENT MOVEMENT OR INSTANT RESTART CAPABILITY EXISTS UNTIL VEHICLE IS FULLY SHUT DOWN. WEAR APPROPRIATE PPE.

02 IMMOBILIZATION / STABILIZATION / LIFTING

- 1 Choke wheels,
- 2 Put the vehicle in neutral (N) and engage the handbrake.



Lifting points,
Use these lifting points if it's needed.



03 DISABLE DIRECT HAZARDS / SAFETY REGULATIONS

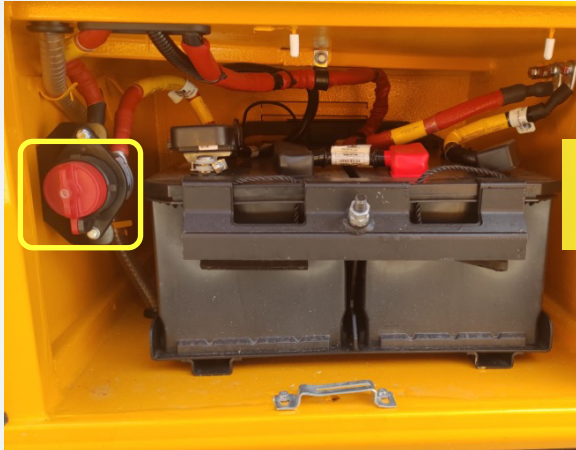


DO NOT ATTEMPT TO OPEN HIGH VOLTAGE BATTERY.

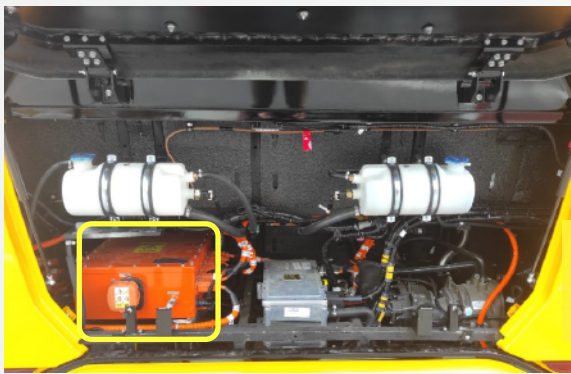


Main Method:

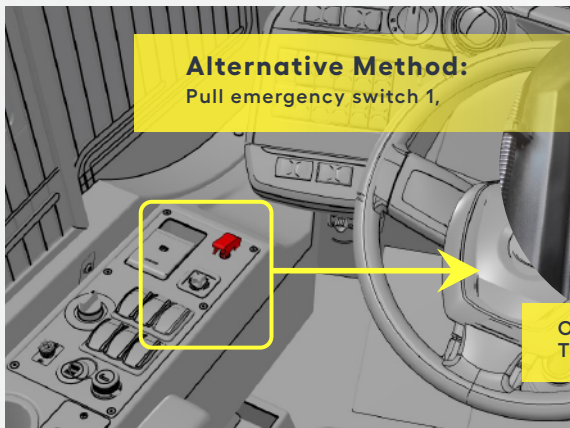
- 1 Stop engine via switching off the ignition key then go to the back of the vehicle.



2 Switch off the LV main switch.



3 Pull out the MSD on PDU that disconnects HV from PDU to vehicle.



Alternative Method:
Pull emergency switch 1,

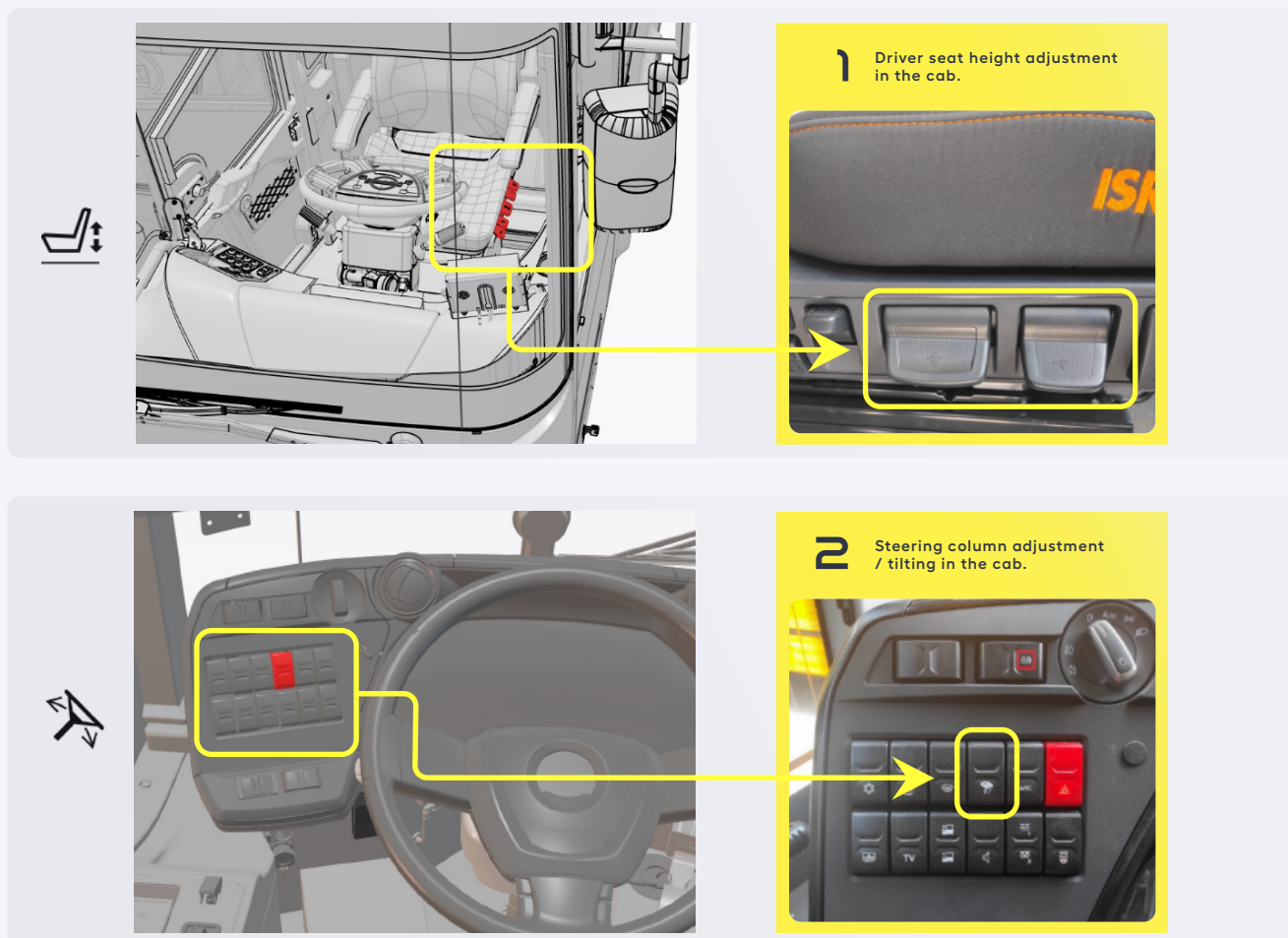


Or pull emergency switch 2.
Then repeat 2 and 3 respectively.



Access To 12V Batteries:
Switch off the LV main switch.

04 ACCESS TO THE OCCUPANTS



05 STORED ENERGY / LIQUIDS / GASES / SOLIDS

		660 V
		12 V + 12 V
		4,8 kg + 1,1 kg

06 IN CASE OF FIRE



Use Large Amount Of Water



After Risk Assessment,
If Necessary Use Foam



BATTERY RE-IGNITION!

07 IN CASE OF SUBMERSION

Wear appropriate PPE. Remove the vehicle from the water and continue with normal high voltage (see chapter 3). Vehicles submerged in salt water should be handled with a greater potential risk of a HV battery fire.

Tilt the vehicle to one side to allow water to drain out of the vehicle and the high voltage battery.

08 TOWING / TRANSPORTATION / STORAGE

Max Towing Speed: 60km/h

